

EN



SNOWMAKING

Not a fan, not a lance ... it's a Bachler!

Innovative snowmaking systems, modular design,
powerful and specifically applicable

It's a Bachler!

With our years of experience in snowmaking, we develop our own snow lances since 1999. Due to the continuous development, the snowmaking systems are always state-of-the-art and extremely energy-efficient. We are happy to help you with our experience to find the best solution for your ski area!



Swissness

The Bachler products are developed and manufactured in Switzerland. Everything out of one hand, made in Switzerland.



Energy efficient

The Bachler snow lances are extremely energy efficient without any loss of performance.



Huge experience

Bachler, the pioneer in snowtechnology. Since more than 40 years in the snow business.



Modular design

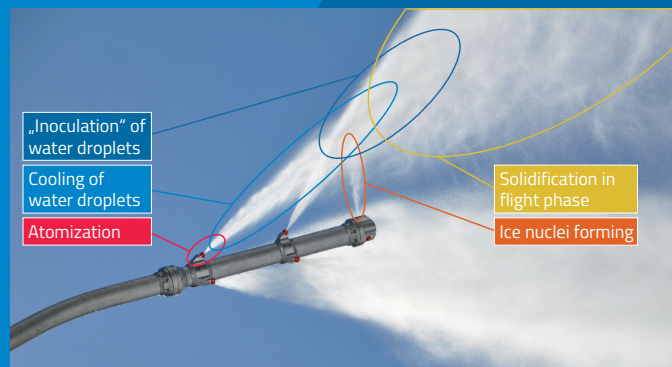
All Bachler snow lances are modular designed, which allows an easy adaptation and enlargement of your equipment.



NESSy technology

The heart of all Bachler lances is the NESSy technology. Researched and tested over 3 years between 2005 and 2008, among others in collaboration with the SLF (Swiss Federal Institute for Snow and Avalanche Research Davos) and the FHNW (University of Applied Sciences Northwestern Switzerland). In detail, the „hot phase“ in the snow emergence was investigated - ice nucleation and solidification in flight.

It was researched where and when the ice nuclei from the compressed air / water nucleator nozzles had to hit the droplets from the water nozzles. If the drop shape and size, timing and position in this „inoculation process“ are perfect, the result is that in the solidification phase, high-quality technical snow is formed in a 10-second flight.



Important achievements have been made in optimizing key issues such as early start in the marginal temperature range, higher energy efficiency and lower noise emissions. The NESSy technology is patented worldwide!

The head makes the difference

Thanks to continuous development of our own patents and the modular product development, NESSy and SnoTek consolidated their technological unique position over the years. This claim is most evident with the multihead variants MEDUSA and TRIDUSA. The appearance is independent and there is no comparison to the commercially available, slender designed „sticks“.

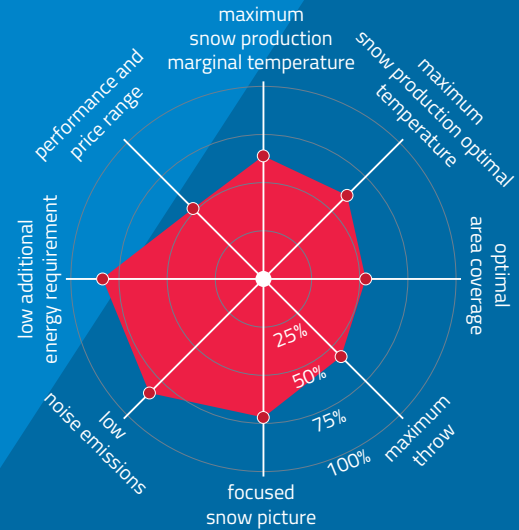
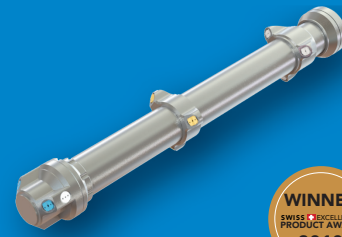
The Bachler multi-head versions achieve 2 to 3 times the amount of snow with a comparable quantity of compressed air use. Without costly investments, existing water / air infrastructures can be optimized. With Bachler a snow production up to 120 m³ per hour is possible!



The SnoTek MEDUSA reaches the full capacity even at -8 °C WBT and is able to process up to 900 liters of water per minute and to produce up to 120 m³/h snow.

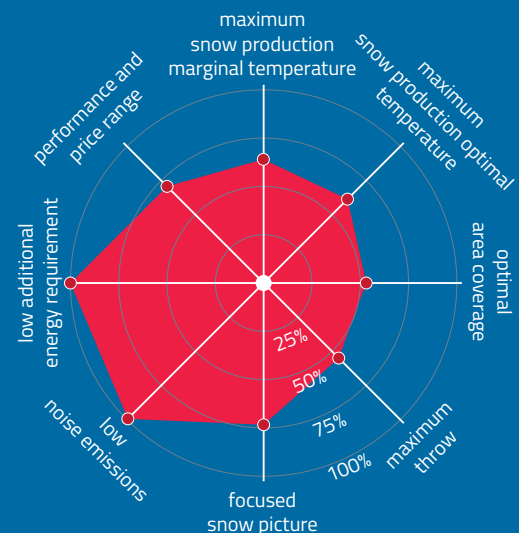
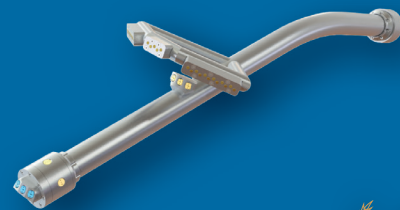
NESSy

The start into the NESSy technology and the first step into the energy-efficient snowmaking. The single head lance is perfect for fully developed lance snowmaking-systems. The worldwide patented NESSy technology has been awarded with the Swiss Excellence Award.



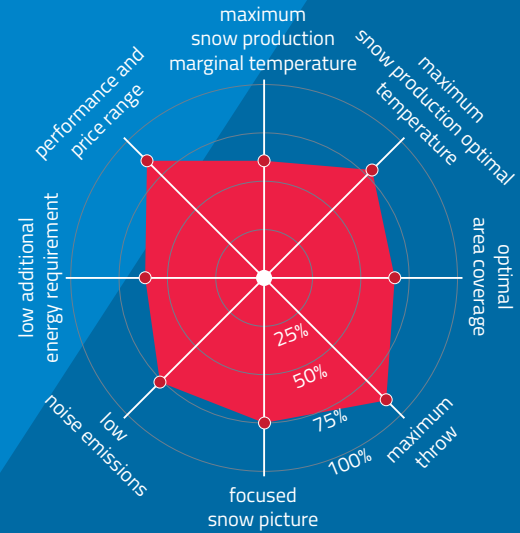
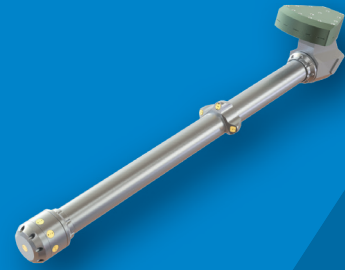
NESSy ZeroE

A snow production completely without electricity and additional energy. With the NESSy ZeroE that is reality. Due to the drop height of the water, the required water pressure is reached. A jet pump generates the individual media compressed air and water ... and it snows, only with the power of nature.



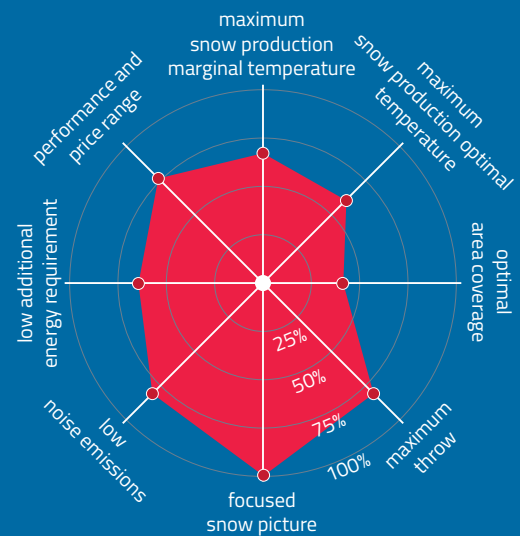
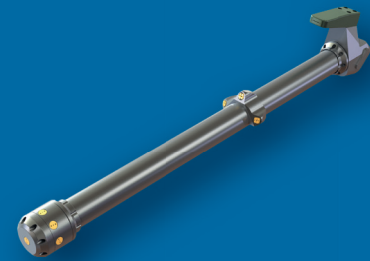
SnoTek

With the SnoTek-Technology, the snow lances from Bachler catch up the performance of low-pressure fan guns. With a fraction of the required energy comparable throwing distances are achieved. The 8 different snow steps always allow optimum snow quality with maximum performance.



SnoTek TRACK

The SnoTek TRACK has a particularly focused and at the same time wide throw. The snow is right there where you need it. The ideal solution for small slopes, cross-country trails, toboggan runs and hiking trails. The 1- or 2-steps lance reaches a waterflow of up to 170 l/min and can produce up to 23 m³ of snow per hour.

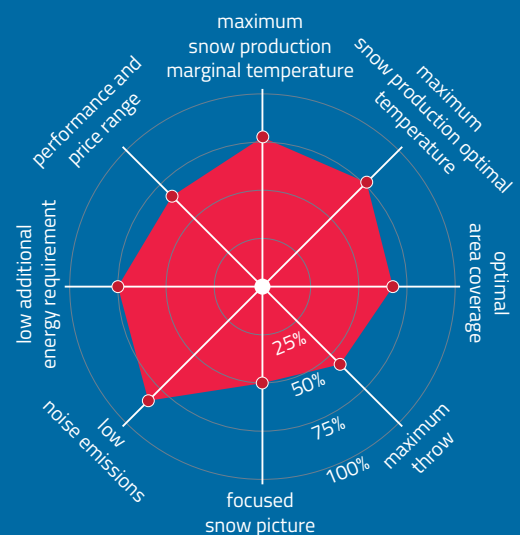
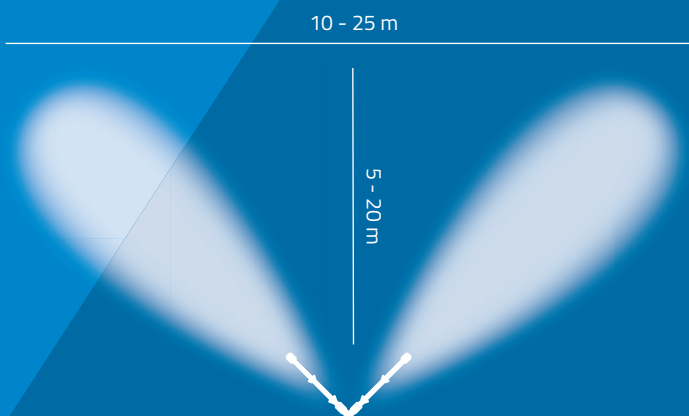
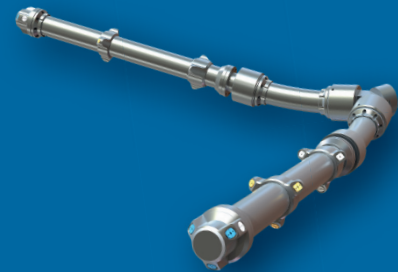




Bachler SnoTek TRIDUSA - incomparable performance in the marginal temperature range.

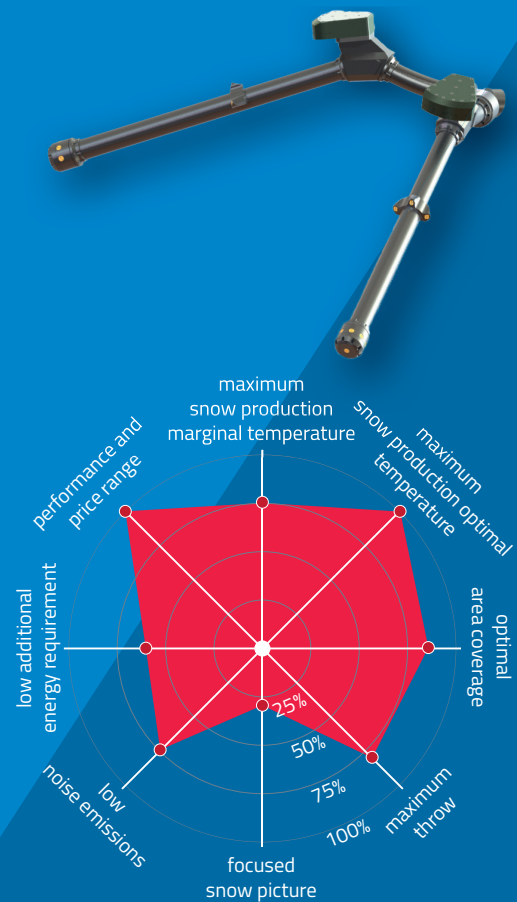
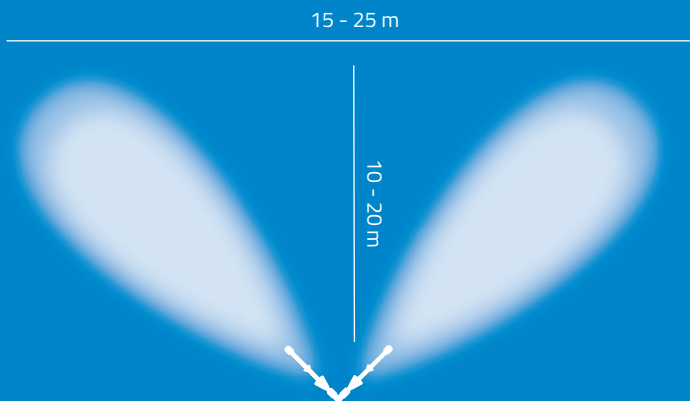
NESSy MEDUSA

The double-head lance, based on the successful NESSy technology, not only offers twice the amount of snow, but also a large area coverage due to the 90° angle. The system is ideal for retrofitting existing systems. Over the entire application area an impressive performance is achieved.



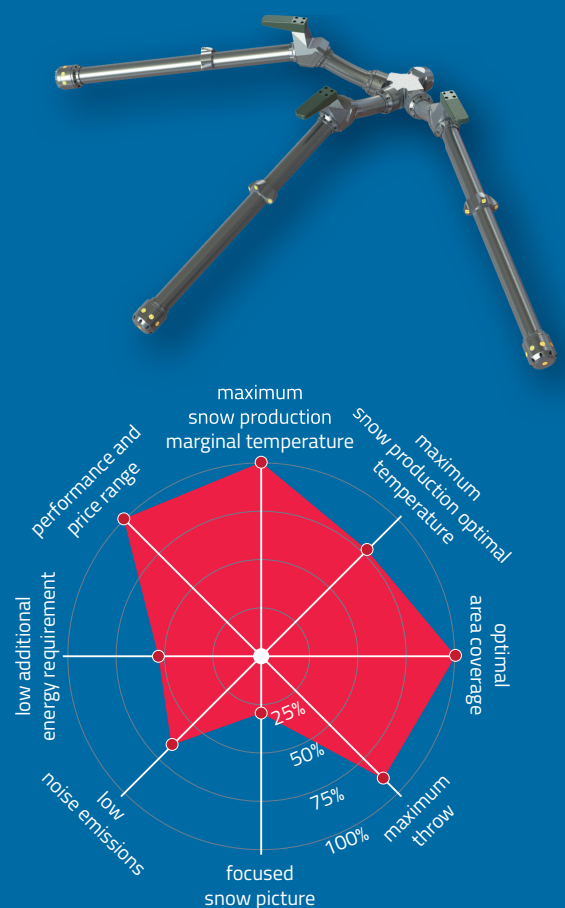
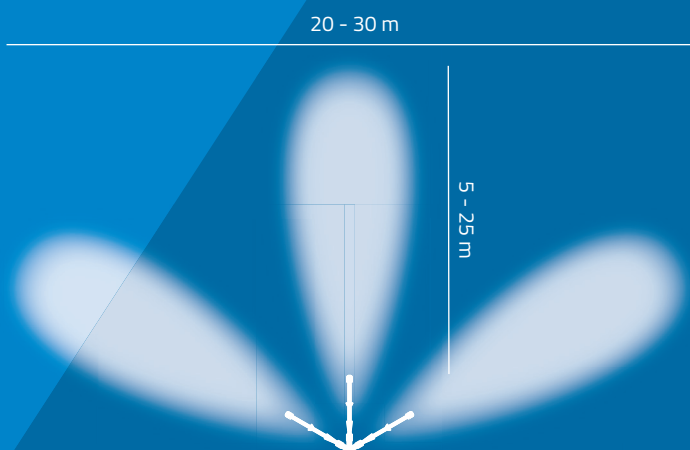
SnoTek MEDUSA

The license for maximum snow production. The power machine SnoTek MEDUSA reaches its full power even at -8°C WBT and can process up to 900 liters (!) of water per minute and produce up to $120\text{ m}^3/\text{h}$ snow with a large-area coverage. The SnoTek MEDUSA also has 8 different snow steps for optimum snow quality.



SnoTek TRIDUSA

For short snow production-windows the perfect solution. The Bachler SnoTek TRIDUSA achieves incomparable performance in the marginal temperature range. From -2°C WBT up to 21 m^3 of snow per hour and at -5°C to -6°C WBT up to $67\text{ m}^3/\text{h}$ can be produced when fully switched on. The 2-steps lance triples the snow production with a huge area covering due to the three heads.





Bächler Top Track AG

Headquarters
Lohrensäge 2
CH-6020 Emmenbrücke

Branch office Austria
Bergmannstrasse 7
AT-6850 Dornbirn

+41 56 677 71 00
info@bachler.ch
www.bachler.ch
[#bachlertoptrack](https://www.instagram.com/bachlertoptrack)



Maximum efficiency through customized solutions

The Bachler Top Track snow-making systems are designed for modularity and maximum efficiency. Many variants and customized solutions are possible!

With passion we are looking for the best solution for you. We look forward to your call!

Phone +41 56 677 71 00