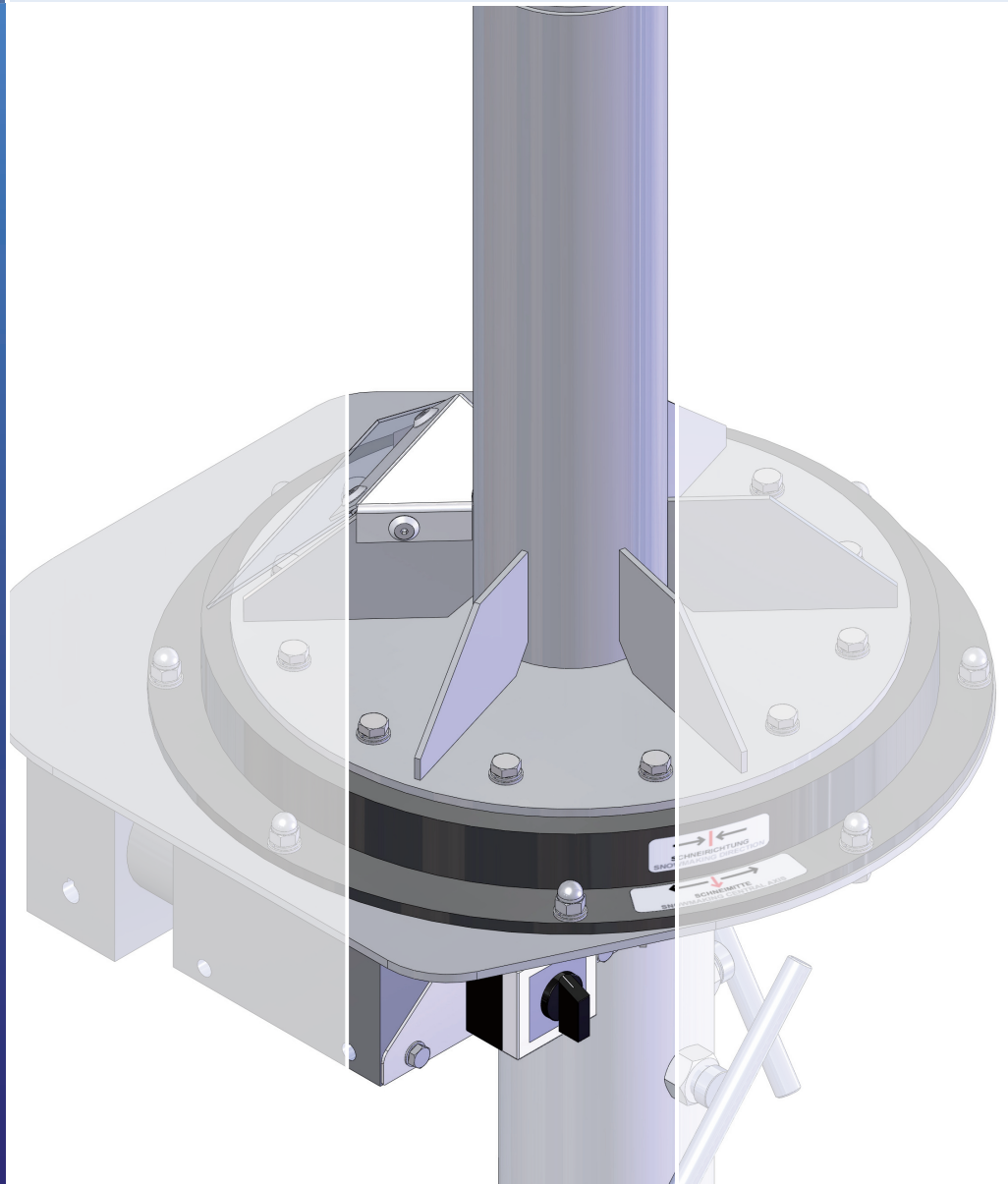


## SLEWING DRIVE

for an optimal area width snowmaking



Bächler Top Track AG  
Snowtechnology  
Industriestrasse 3  
CH-5644 Auw

+41 (0)56 677 71 00  
+41 (0)56 677 71 01  
www.bachler.ch  
info@bachler.ch

Pisten & Loipen

Beschneigung

Fun

## SLEWING DRIVE

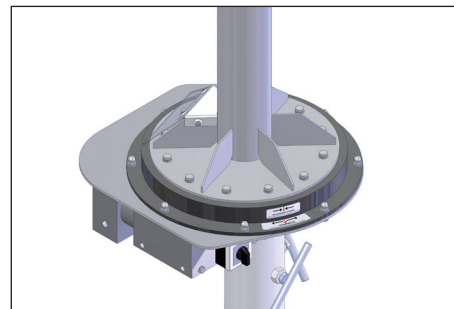
The slewing drive is used for the optimal area width snowmaking. By a permanent slewing of the snowmaker the snow cools down better. Thereby you reach a higher snowquality.

The slewing drive is applied predominantly by SnoTek, but also by NESSy. The slewing drive is mounted between the standpipe and MAV. The slewing range can be triggered mechanically optional on 90°, 65° or 50°.

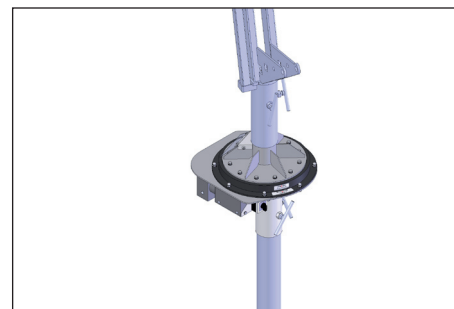
The slewing drive is actuated by a twin screw drive and an eccentric shaft with driving plate. That is to say: 1 rotation on the drive output results in 1 pivoting bidirectional, regardless of which pivoting angle is adjusted.

### Technical data

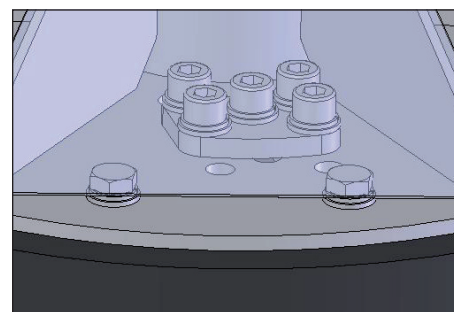
Connection voltage:	230 V / 50 Hz
Engine power:	370 W
Engine speed:	1400 min <sup>-1</sup>
Gear ratio:	1:1800
Output speed:	0.78 min <sup>-1</sup>
Swing time:	47 s (bidirectional)
Swing range:	90°, 65° oder 50°
Cable:	3m UV-resistant PUR-connection cable for 230 V (without plug)



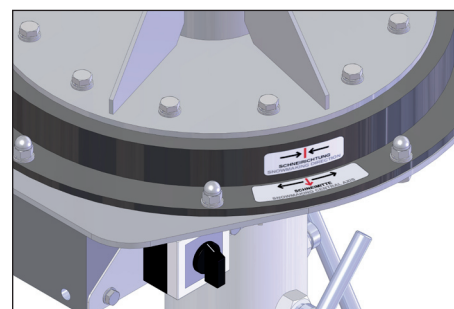
Slewing drive



Slewing drive with standpipe and MAV



Swing range 90°, 65° or 50°



Adjustment of the snowmaking direction and snowmaking center